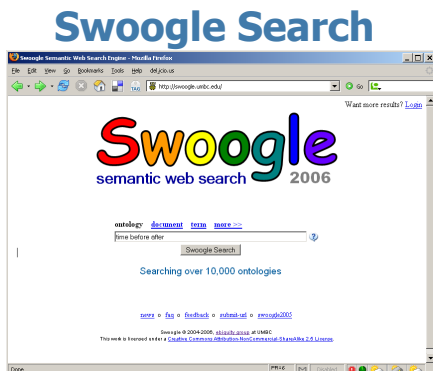
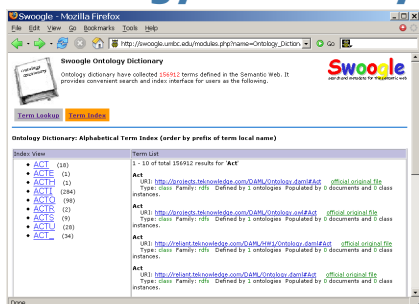


Swoogle

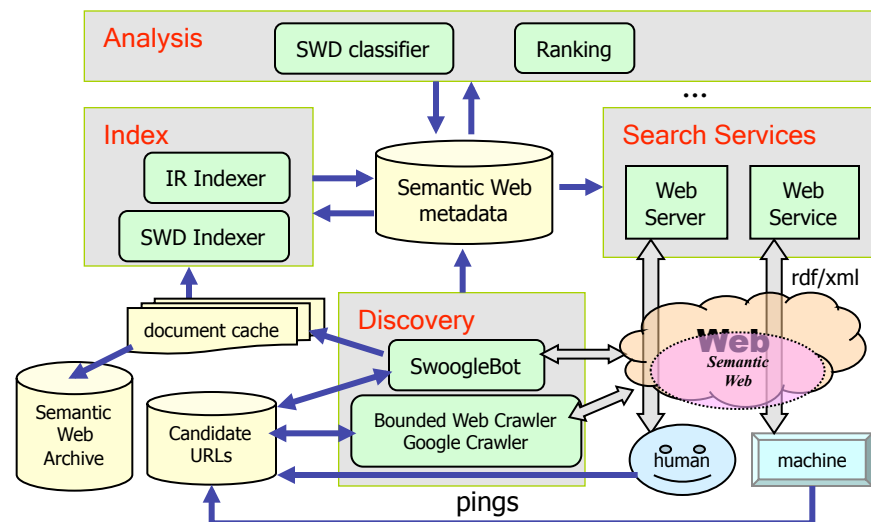
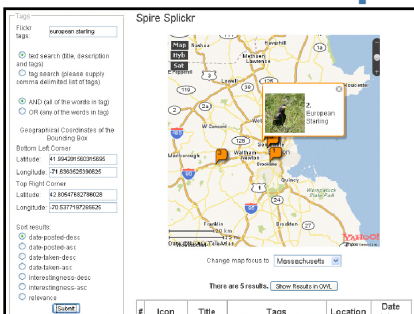
semantic web search 2006



Ontology Dictionary



Semantic Mashups



SW docs	2.2M	classes	1.3M
embedded	740K	properties	150K
triples	425M	individuals	43.1M
ontologies	10K	registered users	954

June 2007

<http://swoogle.umbc.edu/>

Doc. & Term Ranking

OntoRank for RDF documents

$$OntoRank(a) = wPR(a) + \sum_{x \in OTC(a)} wPR(x)$$

$$wPR(a) = (1-d) + d \sum_{linkto(x,a)} \frac{wPR(x) \times f(x,a)}{\sum_{linkto(x,y)} f(x,y)}$$

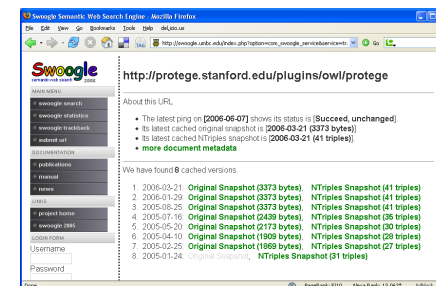
$$f(x,a) = \sum_{link(x,l,a)} weight(l)$$

TermRank for RDF terms

$$TermRank(t) = \sum_{uses(d,t)} \frac{OntoRank(d) \times Weight(d,t)}{\sum_{uses(d,x)} Weight(d,x)}$$

$$Weight(d,t) = cnt_uses(d,t) \times \{|d|uses(d,t)\}$$

Sem. Web Archive



Swoogle Triple Shop

