

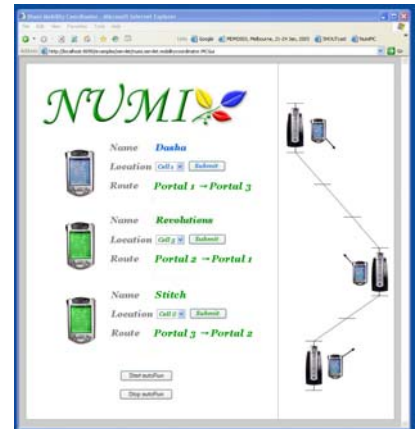


Collaborative Mobile Data Management in Infostation Networks

Olga Ratsimor, Sethuram Balaji Kodeswaran, Anupam Joshi, Tim Finin, Yelena Yesha
Department of Computer Science and Electrical Engineering,
University of Maryland Baltimore County
1000Hilltop Circle, Baltimore, MD 21250

Motivation

- Expensive WAN connections
- Devices with limited and varying capabilities
 - Low power
 - Limited processing power
 - Smaller display
 - Limited memory
- Mobile disconnected operation
- Applications with larger data requirements
 - Multimedia
- Infostations offering low cost islands of high speed connectivity



Proposed Solution

- Infostations actively schedule data delivery to the devices in need.
- Infostations identify the mobile hosts that do not have enough data storage to store the data requested by the user.
- The *Origin* Infostation notifies the *Next* Infostation along the devices route about the device limitations.
- The *Next* Infostation identifies the carrier devices heading towards this device in need.
- The carrier device is give the data volume to be delivered to this device in need.

